

Rooted in Community, Living through Change

ANNUAL REPORT 2021/2022



PARC Board of Directors

Generous with their time and commitment to deliver on our mission, we are grateful to the PARC Board of Directors; a group uniquely comprised of seven community directors from our neighbourhood and seven PARC member directors.

Tyde Cambridge

Peter Martin

Lynne Sky

Richard (Rick) Edwards

Heather Payne

Kelyang Tenzin

Ko Hosoya

Aarti Rana

Bruce Voogd

Hazel Jackson

Geetha Rahupathy

Beryl-Ann Williams

Laura Lesser

Silvia Samsa

Indigenous Truth and Reconciliation:

Our actions and commitment

PARC has a Reconciliation Plan as a key pillar in our Strategic Planning for 2022. As an organization, we are exploring the relationship we have with Indigenous people and how PARC will embed the Calls to Action.

Canada's National Day for Truth and Reconciliation and Orange Shirt Day take place on September 30th every year. The day honours the lost children and Survivors of residential schools, their families and communities. PARC continues to have activities that reflect our commitment to reconciliation and truth for missing and murdered women, girls and children.



Rooted in Community

In 2020/21, the COVID-19 pandemic was the predominant factor impacting our programs, services, members, and staff. In 2022, despite the ongoing pandemic, we began the year with hope. The hope of increased vaccinations and the pandemic subsiding. The hope of recovery and rebuilding with universal basic income and investments in housing.

Throughout last year, we continued to live through change; delivering programs in hybrid formats, recalibrating the capital improvements for our properties as significant investments are needed for the kinds of homes we imagine; seeing the increasing diversity at PARC and the need for equitable, inclusive design; and, recognizing that the immediate emergency demands meant that our Strategic Planning had to be put on hold for the past two years.

Our priority remained the safety of our members, staff, and neighbours. We continued to host vaccine and testing clinics, provided nutritious meals to everyone who came to our door, and made sure that more housing was acquired so that it remains deeply affordable for those most in need in Parkdale. And core to our mission - making sure that PARC is supporting the most vulnerable members of our community.

Thank you to our staff, members, volunteers, board members, committees and donors for staying with us throughout these uncertain times and supporting us in countless ways so that we remain an effective presence in our neighbourhood. This year's annual report is a testament to the care and commitment of our entire community working tirelessly, together.

Gratefully,

Victor Willis

Executive Director, PARC

Tyde Cambridge

Co-Chair, PARC Board
of Directors

Bruce Voogd

Co-Chair, PARC Board
of Directors

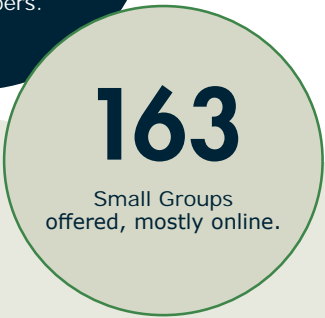
Living through Change

PARC staff and volunteers provided a steady beacon of hope, holding the mission of PARC high in the face of ongoing uncertainty. We are incredibly grateful for their dedication and leadership in caring for our members.

Their unwavering commitment to service and operations, while upholding a high level of infection prevention controls was exemplary, and our community was safer as a result.

You are Essential. Thank You.

The service levels provided despite great limitations over the past year, show both the growing demand in 2021/22 and the hard work required by all staff to deliver them.



A Home. A Job. A Friend. A Neighbourhood.



Key programs, services and activities 2021/22

Housing continues to be a major focus as we strive for long-term affordability, managing tenant needs and expectations, and providing quality living in safe and affordable units.



- PARC received 49 new Rent Geared to Income (RGI) supplements from the City of Toronto for our tenants.
- We hired a new Housing Program Admin to support tenants with the new RGI process.
- The Edmond Place Garden Project was completed, incorporating indigenous plants into the rooftop and front garden.



- Every day PARC Member Employment Program and PARC Kitchen fed over 200 people, 20 Edmond Place residents and 30-50 homeless members.
- 47% of our staff are in our Member Employment Program, including Peers who bring lived experience as they provide supports including harm reduction, assistance for community-based services, mental health and addiction services, post-housing community integration, and life skills.
- Member Employment Services were greatly affected, many programs remain closed due to the pressure of the pandemic.

Placing safety at the centre of our work

Throughout the pandemic PARC diligently upheld public health guidelines and continuously implemented systems, while providing the best service we could to vulnerable members.

We used a combination of safety protocols, human resource practices, employee education and regular communications in the development and implementation of our COVID-19 safety plan.

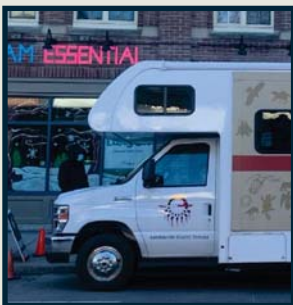


- PARC worked with the City of Toronto Shelter, Support & Housing Administration (SSHA), and the Ministry of Health and Long-Term Care via Ontario Health (OH) groups to develop Infection Prevention and Control (IPAC) guidelines.

- N95 masks were provided to all staff and Rapid Antigen testing protocols were implemented ensuring there was testing prior to starting work.

- We hosted pop-up vaccine clinics April through June 2021 supporting over 250 members to get first and second doses.

- The Anishnawbe Health Toronto Mobile Healing team provided PCR testing outside of PARC on a monthly basis.



- Drop-in space funding was received from the City of Toronto to modify the space in efforts to decrease the transmission of COVID-19.

- All of these actions helped contain and manage an outbreak in early January 2022. We are thankful for the continued support of our health partners and the City of Toronto.



- With an increase in homeless members who access our Drop-In, the PARC Kitchen Team, in just one quarter, produced an incredible 44,594 meals for our community.
- Drop-in service shifted; we prioritized service for those in greatest need - our homeless members, and hired staff to create and support online groups for members.
- As the only large meal program in this area, programming was impacted by staff shortages. This was managed by reducing the number of homeless individuals served, and providing one substantial meal a day with packaged goods that could be stored.



The Peer Shelter Support Worker Program Pilot provided valuable information about how Peers can support housing transition.

Peer Shelter program highlights:

- Created a gardening program at one of the shelters.
- Facilitated workshops and completed training sessions.
- Provided advocacy and contributions to the circle of care planning.



- Computer support and classes (in-person and online) were offered, and for many were a great source of support during isolation periods.
- We introduced a new digital service support role for members attending online medical, housing and legal appointments.
- New computers were installed and tablets were distributed for members to access online groups.
- In partnership with the City of Toronto, we launched our Peer Shelter Support Program and provided eight shelters with on-site peer support.
- In addition to providing emotional and social support to members, Peers created a gardening program, facilitated workshops, provided advocacy and contributed to the circle of care planning.
- The program also offered the following training sessions: suicide prevention, mental health, conflict resolution, anti-oppression / anti-racism, documentation skills, housing help services, physical disability training, working for change - peer support, workplace safety, food handlers, CPR & first aid.
- Small Groups shifted online including activities like mindfulness, writing, book club, movie group, poetry and arts.
- PARC hosted a Journey Home, a one-stop-shop HCT event for individuals at risk of, and experiencing homelessness in Toronto to access hygiene supplies, book bags, eye care, income tax clinic, and more.

The Parkdale People's Economy

The Parkdale People's Economy (PPE) is a network of over thirty community-based organizations and hundreds of community members organizing for decent work, shared wealth, and equitable development.

As a member and sponsor of PPE, PARC collaborates on various initiatives including PPE's community planning framework and strategic planning.

2021 saw the completion of PPE's first Parkdale Community Planning Study and the launch of the 2022-2027 strategic plan.

The renewed plan will have new areas of community action, such as community safety, climate action, and crisis planning drawn from mutual aid practices. PPE will continue their work to address systemic change, and expand the visions to incorporate interfaith engagement, mutual aid networks, and racialized leadership.

Learn more about PPE's community actions, advocacy and how to get involved at: parkdalepeopleseconomy.ca





In March 2022, we hosted a virtual “Welcome Home” event - our first in two years. The event helped raise much needed funds for tenant support by providing essentials in “welcome baskets” and starting gardens around the buildings. It was an evening filled with inspiring stories, music and community. Thank you to our generous sponsors, attendees and donors who helped us raise \$12,000!

Housing is a Human Right

Buying older buildings isn’t a business strategy, it’s a social investment mission. Our acquisition of three older buildings to keep affordable housing and homes for tenants was the priority in 2020-2021.

Following the acquisition, we needed a capital plan to make the extensive repairs and renovations that these properties require. Thanks to the City of Toronto, we have a good investment for one of the properties that needs significant upgrades.

PARC currently has 115 units needing minor and major repairs along with the 36 units being managed for the Parkdale Neighbourhood Land Trust (PNLT).

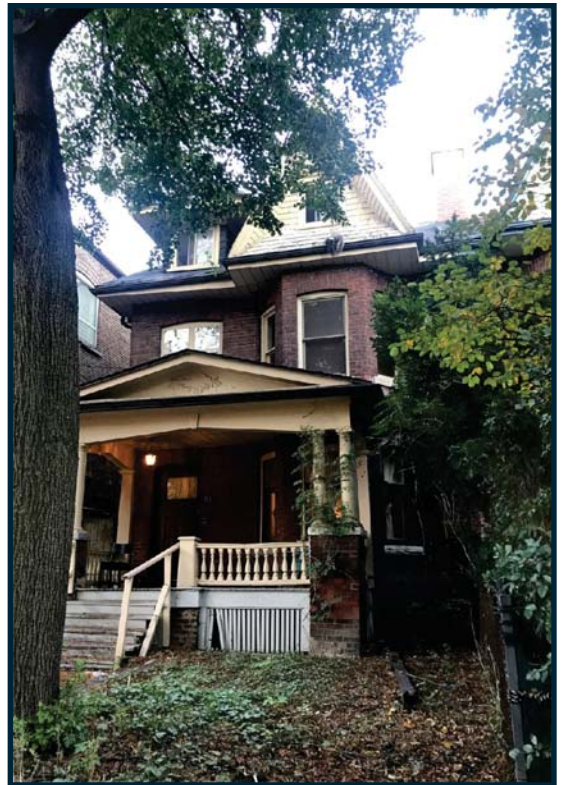
We continue to focus on finding support and allocating capital repairs and renovations so our tenants have safe places they can call home.

Parkdale Property Management

Parkdale Property Management (PPM) is our full-service property management enterprise primarily serving non-profit owned affordable housing. Responsible for 8 residential properties, PPM provides property management to 151 housing and/or supportive housing units.

PPM's approach for operations is to develop and implement processes that set performance standards, with monitoring systems in place to review, modify and improve targets, and performance.

Through 2021/22 PPM introduced technology to work with a maintenance request system resulting in reduced backlog and a clearer picture of required maintenance work.



The Parkdale Neighbourhood Land Trust (PNLT)

PARC was a founding member of the PNLTL in 2014 and continues to work closely with them as a key housing partner.

Through a community land trust model, PNLTL purchases land and buildings to ensure they are used to meet the needs of the community. The land and/or buildings are leased to non-profit partners to operate tenant housing, social enterprise space and community gardens.

PARC Gratefully Acknowledges

Funding allows us to keep our doors open and serve our community.

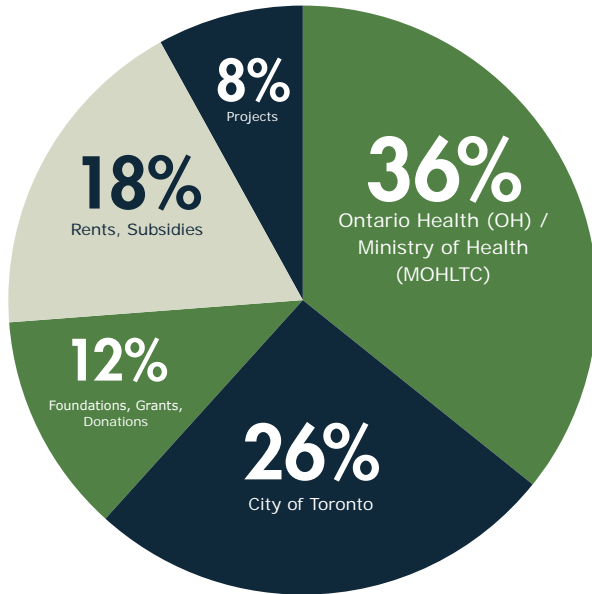
We are grateful for all the generous support to help us build a strong foundation for PARC's future.



An agency of the Government of Ontario
Un organisme du gouvernement de l'Ontario



Operating Revenue \$6,452,874



Financial Report

The graphs represent the combined statements of operations for all PARC programs and services excluding capital activity and depreciation.

36% Ontario Health (OH) / Ministry of Health (MOHLTC)

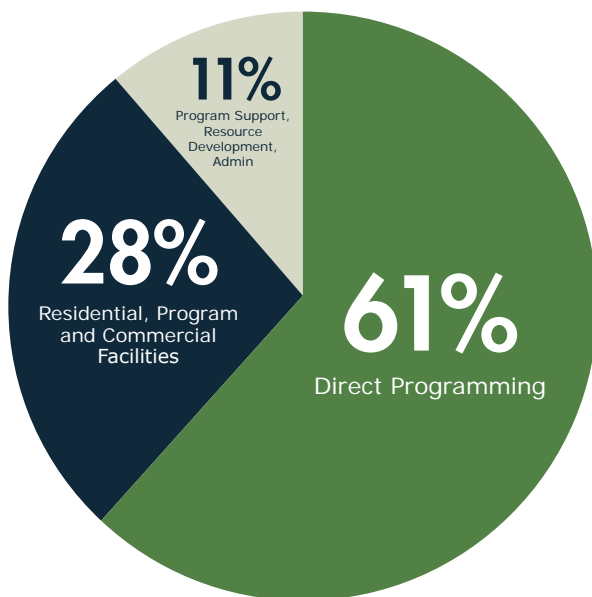
26% City of Toronto

18% Rents, Subsidies (additional 7.5% in subsidies included with MOH & City)

12% Foundations, Grants, Donations

8% Projects, The Silver Brush

Operating Expenses \$6,463,124



61% Direct Programming

28% Residential, Program and Commercial Facilities

11% Program Support, Resource Development, Admin

We Remember

Shannon Timmerman (Chevy)

Noelle P

Phu Tam (Phil) Hunyh

Ann Morton

Rosemary Piatrias

Darlene Lucas

Cheryl Latus

Lewis Johnson

Said Jama

Trevor Parkinson

Curtis Barns

Sabrina D

Steven Wedge

In the Heart of Parkdale for over 40 Years

Where to find us online:
parc.on.ca



[linkedin.com/company/parc](https://www.linkedin.com/company/parc)

Sign up for PARC e-news at:
parc.on.ca/join/newsletter

Parkdale Activity-Recreation Centre

1499 Queen St. West
Toronto ON M6R 1A3
Charity #: 12967 8231 RR 0001

